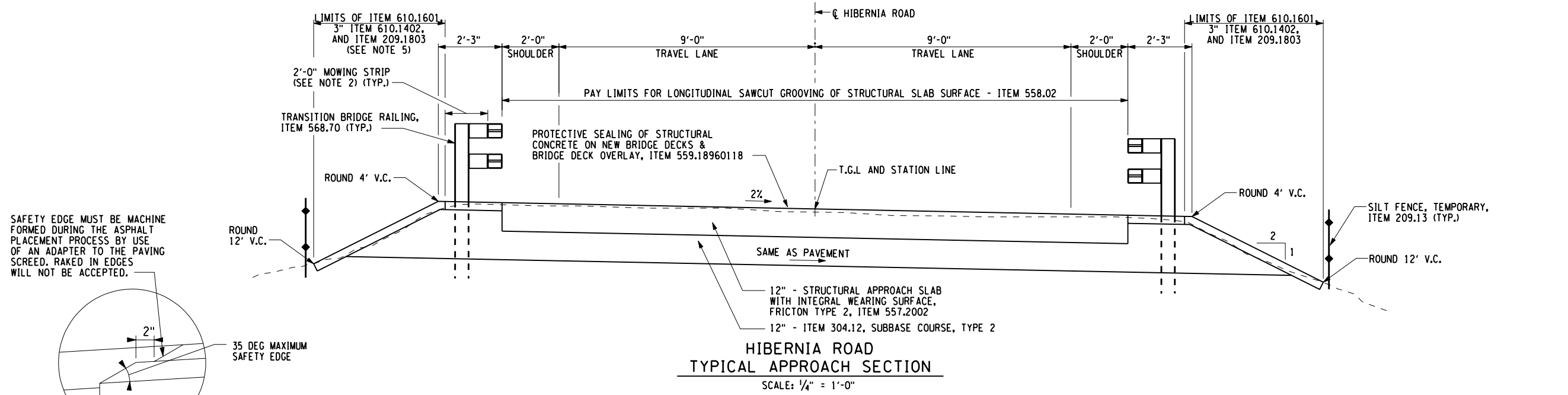


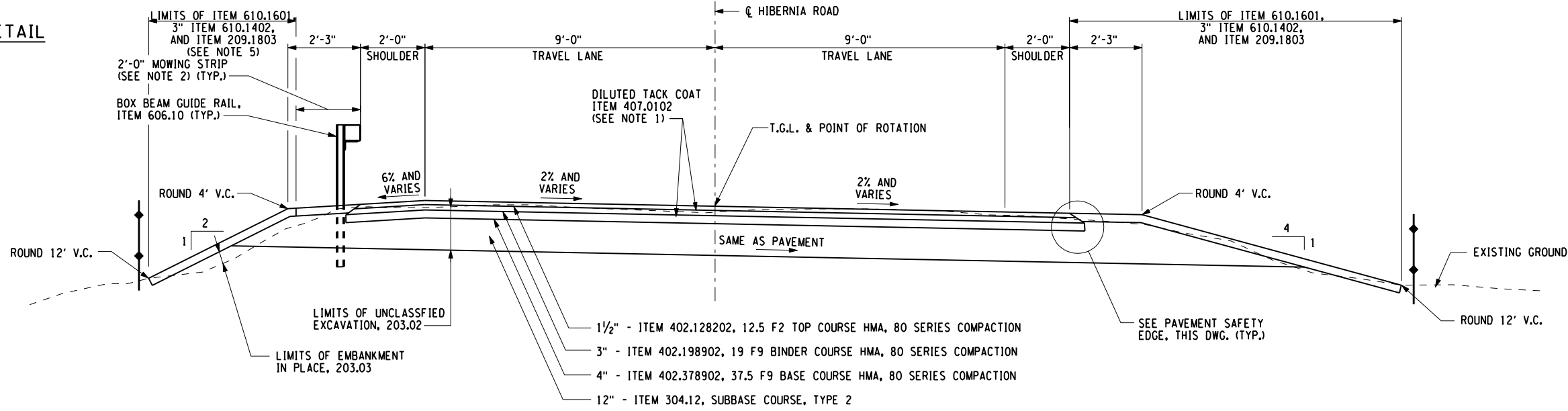
L:\MicroStation\workspace\Plot\NYSDOT\NYSDOT SIZE B - HPM712.tbl
 L:\MicroStation\workspace\Plot\NYSDOT\NYSDOT.LJ5000.B.04.00.plt

L:\MSTN\Projects\1000\1046.002\121\MS\TN\2014-12\Final\005-1046002\121\Typical Section.dgn
 DATE = 2/10/2015
 TIME = 12:47:54 PM

IN CHARGE OF RJS DESIGNED BY LFH/JDHSR CHECKED BY JMB ESTIMATED BY ARD/JDHSR CHECKED BY LFH DRAFTED BY JDHSR/MEK CHECKED BY JMB



**HIBERNIA ROAD
 TYPICAL APPROACH SECTION**
 SCALE: 1/4" = 1'-0"



**HIBERNIA ROAD
 TYPICAL ROADWAY SECTION**
 SCALE: 1/4" = 1'-0"

PREPARED BY: BARTON & LOGUIDICE, D.P.C.
 ON: DECEMBER 19, 2014

ITEM NO.	DESCRIPTION	UNITS	ITEM NO.	DESCRIPTION	UNITS
203.02	UNCLASSIFIED EXCAVATION AND DISPOSAL	CY	568.70	TRANSITION BRIDGE RAILING	LF
203.03	EMBANKMENT IN PLACE	CY	606.10	BOX BEAM GUIDE RAIL	LF
209.13	SILT FENCE - TEMPORARY	LF	608.020102	HOT MIX ASPHALT CONCRETE SIDEWALKS, DRIVEWAYS, BICYCLE PATHS, AND	TON
209.1803	ROLLED EROSION CONTROL PRODUCT, CLASS I, TYPE C, SHORT TERM	SY		VEGETATION CONTROL STRIPS	
304.12	SUBBASE COURSE, TYPE 2	CY	610.1402	TOPSOIL - ROADSIDE	CY
402.128202	12.5 F2 TOP COURSE HMA, 80 SERIES COMPACTION	TON	610.1601	TURF ESTABLISHMENT - ROADSIDE	SY
402.198902	19 F9 BINDER COURSE HMA, 80 SERIES COMPACTION	TON			
402.378902	37.5 F9 BASE COURSE HMA, 80 SERIES COMPACTION	TON			
407.0102	DILUTED TACK COAT	GAL			
557.2002	STRUCTURAL APPROACH SLAB WITH INTEGRAL WEARING SURFACE, FRICTON TYPE 2	SY			
558.02	LONGITUDINAL SAWCUT GROOVING OF STRUCTURAL SLAB SURFACE	SY			
559.18960118	PROTECTIVE SEALING OF STRUCTURAL CONCRETE ON NEW BRIDGE DECKS AND BRIDGE DECK OVERLAYS	SF			

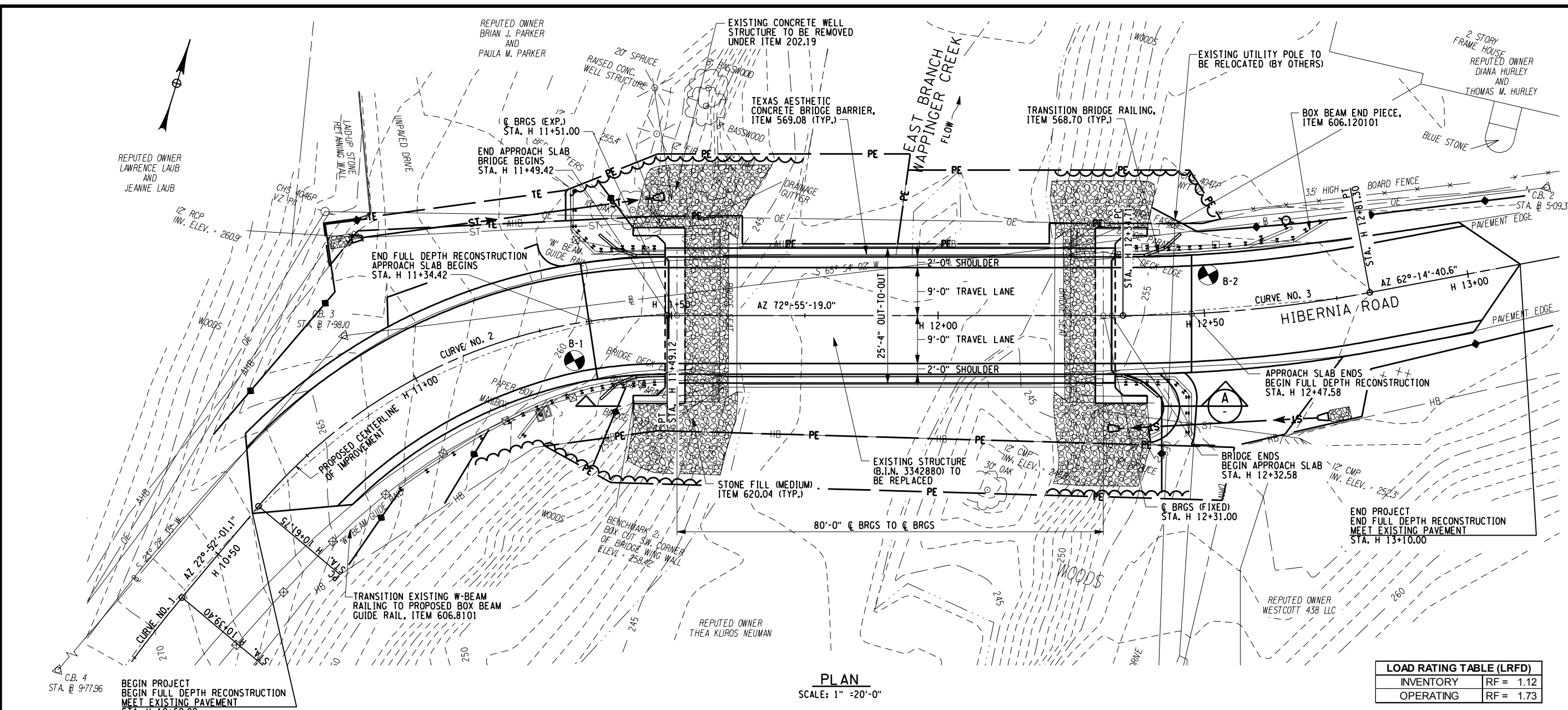
- NOTES**
1. PLACE TACK COAT BETWEEN ALL LIFTS OF ASPHALT.
 2. 3" PAVED MOWING STRIP TO BE IN AREAS WITH GUIDERAIL ONLY. PAYMENT UNDER ITEM 608.020102.
 3. ALL DISTURBED AREAS, INCLUDING AREAS OF FINAL GRADING, MULCHING AND SEEDING, SHALL BE RESTORED WITH ITEM 209.1803.
 4. CONTRACTOR SHALL USE TYPE A: GENERAL ROADSIDE SEED MIX FOR ITEM 610.1601.
 5. CONTRACTOR SHALL UTILIZE LAWN TOPSOIL (ITEM 610.1403) AND LAWN SEED MIX (ITEM 610.1602) AT THE FOLLOWING LOCATIONS: STA. H 11+25 TO H 11+50 LEFT, AND H 12+35 TO STA. H 13+25 LEFT.

NO. DATE BY REVISION	
BRIDGE C-31 HIBERNIA ROAD OVER EAST BRANCH WAPPINGER CREEK TOWN OF CLINTON DUTCHESS COUNTY BIN 3342880	
TYPICAL SECTIONS	
SCALE: AS SHOWN DATE ISSUED: 12/2014 DRAWING TS-1	

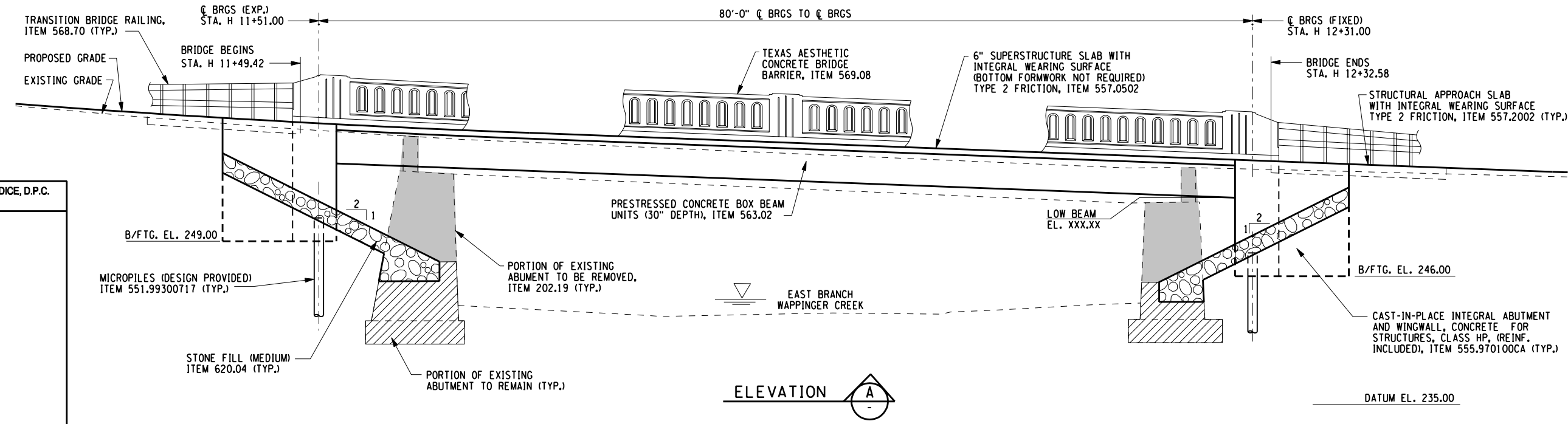
L:\MicroStation\workspace\Plot\NYSDOT\NYSDOT SIZE B - HPM712.tbl
 L:\MicroStation\workspace\Plot\NYSDOT\NYSDOT.LJ5000.B.04.08.plt

FILE NAME = L:\MSTN Projects\1046.002\121\MS\TN 2014-12 Final\015-1046002121 PLEL.dgn
 DATE = 2/10/2015
 TIME = 12:48:57 PM

IN CHARGE OF RJS DESIGNED BY LFH/JDHSR CHECKED BY JMB
 ESTIMATED BY ARD/JDHSR CHECKED BY LFH
 DRAFTED BY JDHSR/JEK CHECKED BY JMB



LOAD RATING TABLE (LRFD)	
INVENTORY	RF = 1.12
OPERATING	RF = 1.73

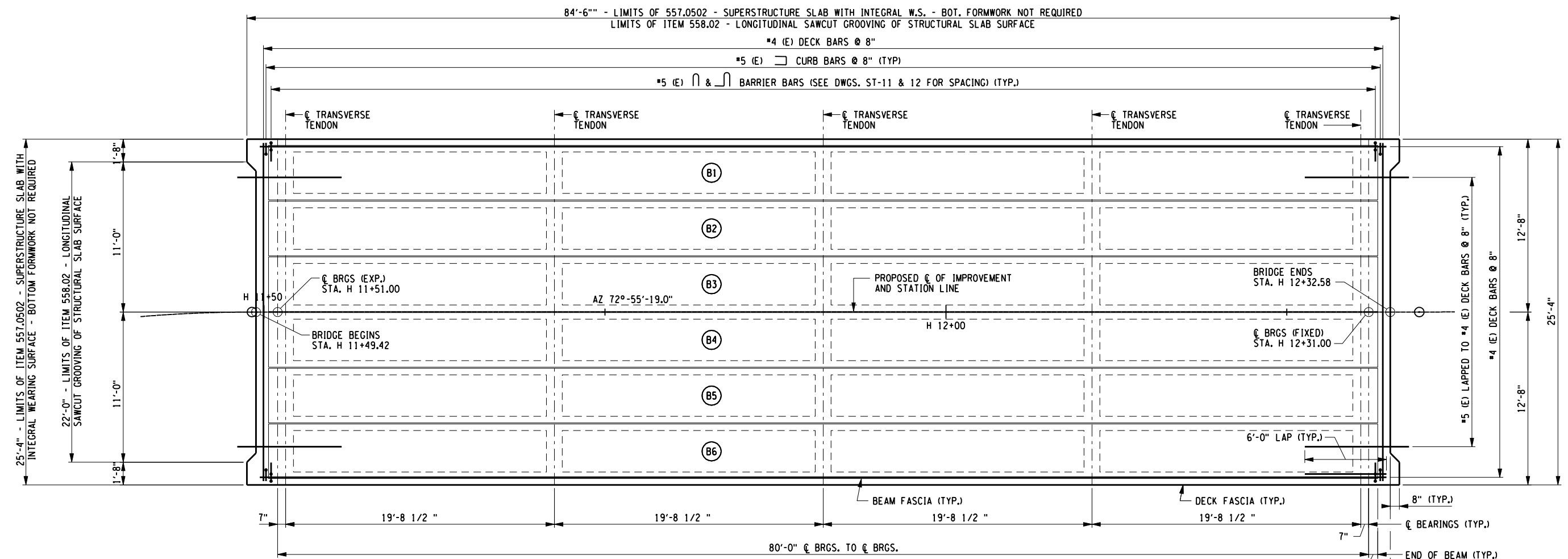


PREPARED BY: BARTON & LOGUIDICE, D.P.C.
 ON: DECEMBER 19, 2014

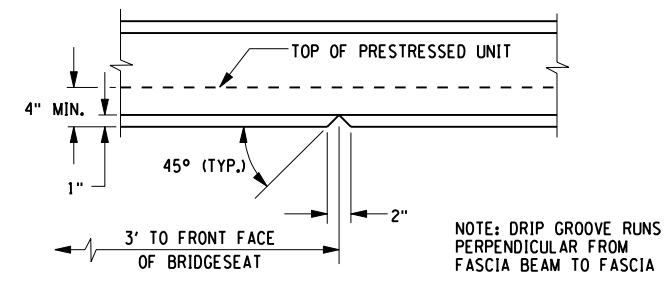
12 30	
Barton & Loguidice, D.P.C.	
<small>UNAUTHORIZED ALTERATION OR ADDITION TO THIS DRAWING IS A VIOLATION OF THE NEW YORK STATE EDUCATION LAW, ARTICLE 145 SECTION 7209</small>	
BRIDGE C-31	BIN 3342880
HIBERNIA ROAD OVER EAST BRANCH WAPPINGER CREEK	TOWN OF CLINTON DUTCHESS COUNTY
BRIDGE PLAN AND ELEVATION	
SCALE: AS SHOWN	
DATE ISSUED: 12/20/14	
DRAWING ST-1	

FILE NAME = L:\MSTN_Proj\1046.002\121\MS\2014-12\Final\1046.002\121\Superstructure 1.dgn
 DATE = 2/10/2015
 TIME = 12:49:31 PM

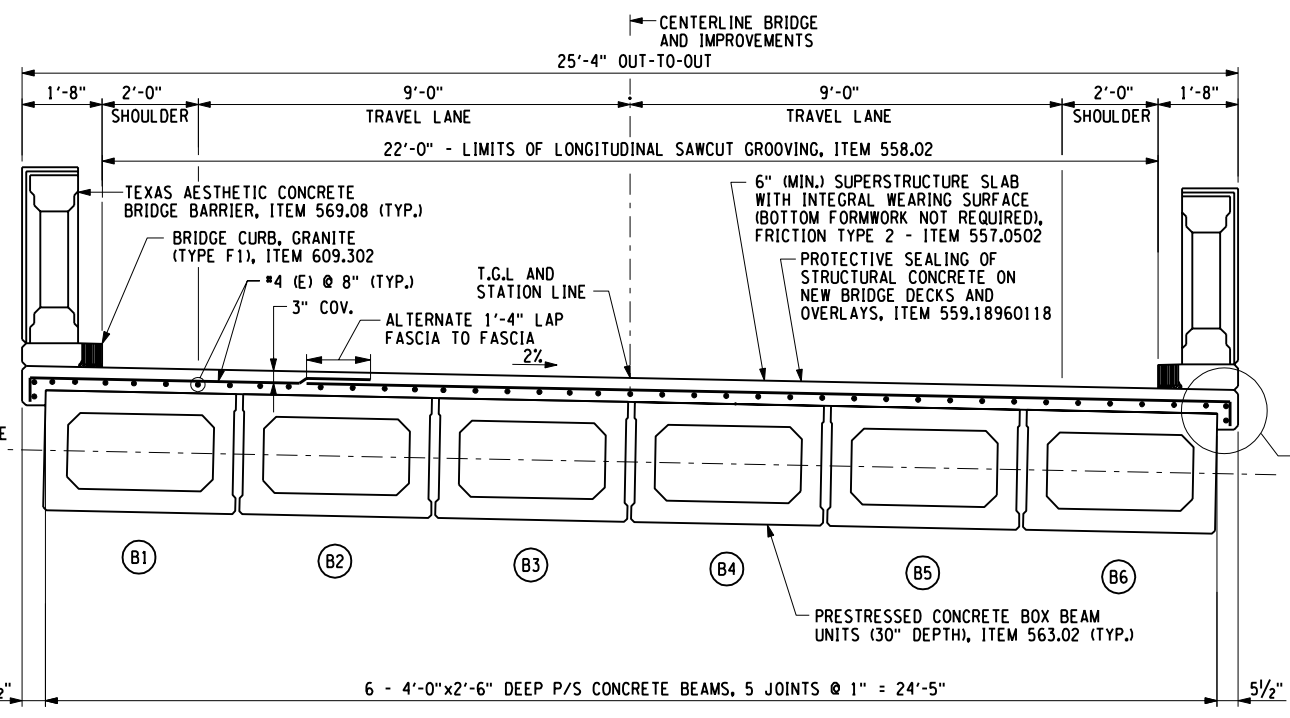
IN CHARGE OF RJS DESIGNED BY LFH/JDHSR CHECKED BY JMB
 ESTIMATED BY ARD/JDHSR CHECKED BY LFH
 DRAFTED BY JDHSR/MEK CHECKED BY JMB



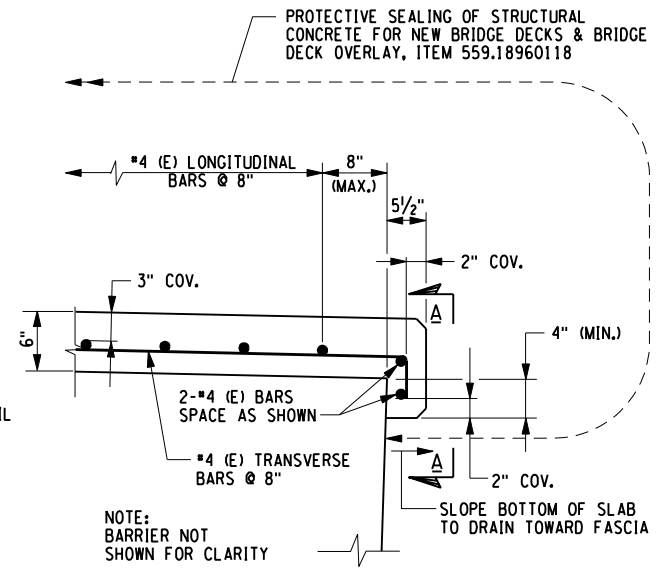
SUPERSTRUCTURE PLAN
 SCALE: 1/8" = 1'-0"



**ELEVATION A-A
 DRIP GROOVE DETAIL**
 N.T.S.



TYPICAL BRIDGE SECTION
 SCALE: 1/4" = 1'-0"



FASCIA DETAIL
 N.T.S.

PREPARED BY: BARTON & LOGUIDICE, D.P.C.
 ON: DECEMBER 19, 2014

NO.	DATE	BY	REVISION



Barton & Loguidice, D.P.C.

UNAUTHORIZED ALTERATION OR ADDITION TO THIS DRAWING IS A VIOLATION OF THE NEW YORK STATE EDUCATION LAW, ARTICLE 145 SECTION 7209

BRIDGE C-31
 HIBERNIA ROAD OVER EAST BRANCH WAPPINGER CREEK
 TOWN OF CLINTON DUTCHESS COUNTY
 BIN 3342880

SUPERSTRUCTURE PLAN AND SECTION

SCALE: AS SHOWN
 DATE ISSUED: 12/2014
 DRAWING ST-10