

SIGNIFICANT HABITATS IN THE TOWN OF CLINTON, DUTCHESS COUNTY, NY

(Sheet 1, North)

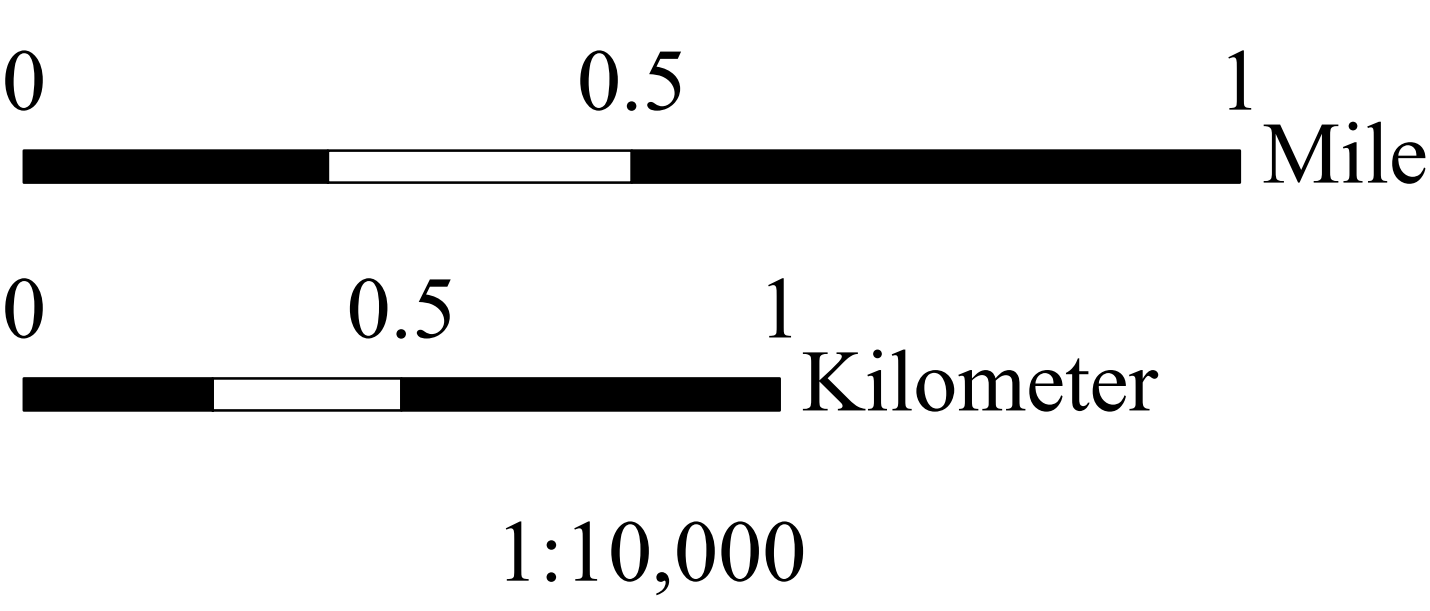
- Town boundary
- Road
- Question
- Developed areas & non-significant habitats

Upland Habitats

- Upland hardwood forest (uhf)
- Upland mixed forest (umf)
- Upland conifer forest (ucf)
- Rocky barren (rb)
- Red cedar woodland (rcw)
- Upland shrubland (us)
- Upland meadow (um)
- Orchard/plantation (or/pl)
- Cultural (c)
- Waste ground (wg)
- Crest, ledge, & talus
- Calcareous crest, ledge, & talus
- Floodplain forest

Wetland Habitats

- Hardwood and shrub swamp (hs)
- Mixed forest swamp (ms)
- Conifer swamp (cs)
- Acidic bog (ab)
- Intermittent woodland pool (iwp)
- Buttonbush pool (bp)
- Kettle shrub pool (ksp)
- Marsh (ma)
- Wet meadow (wm)
- Calcareous wet meadow (cwm)
- Fen (f)
- Circumneutral bog lake (cbl)
- Open water (ow)
- Constructed pond (cp)
- Pool-like swamp
- Heath swamp
- Seep
- Stream
- Spring



Hudsonia Ltd.
P.O. Box 5000
Annandale, NY 12504
www.hudsonia.org

Habitats were identified through map analysis and aerial photograph interpretation, and as many locations as practicable were field-verified. Mapping and field work were done primarily by Hudsonia biologist Christopher Graham. Color infrared photographs in the USGS NAPP series, taken in spring 1994 and 1995 (scale 1:40,000), were used for stereoscopic photointerpretation. Habitats were digitized onscreen over color infrared orthophoto images taken in spring 2004 and 2009 obtained from the New York State GIS Clearinghouse. The report prepared in conjunction with these maps (Graham et al. 2012) explains the habitat identification and mapping methods, describes the ecological significance of each habitat type, and offers conservation recommendations.

Road locations and names were obtained from the New York State GIS Clearinghouse website and modified by us where necessary.

Some habitat types can only be identified in the field. Question marks on the map indicate unchecked areas where such habitats may occur or other ambiguous areas that we were unable to visit.

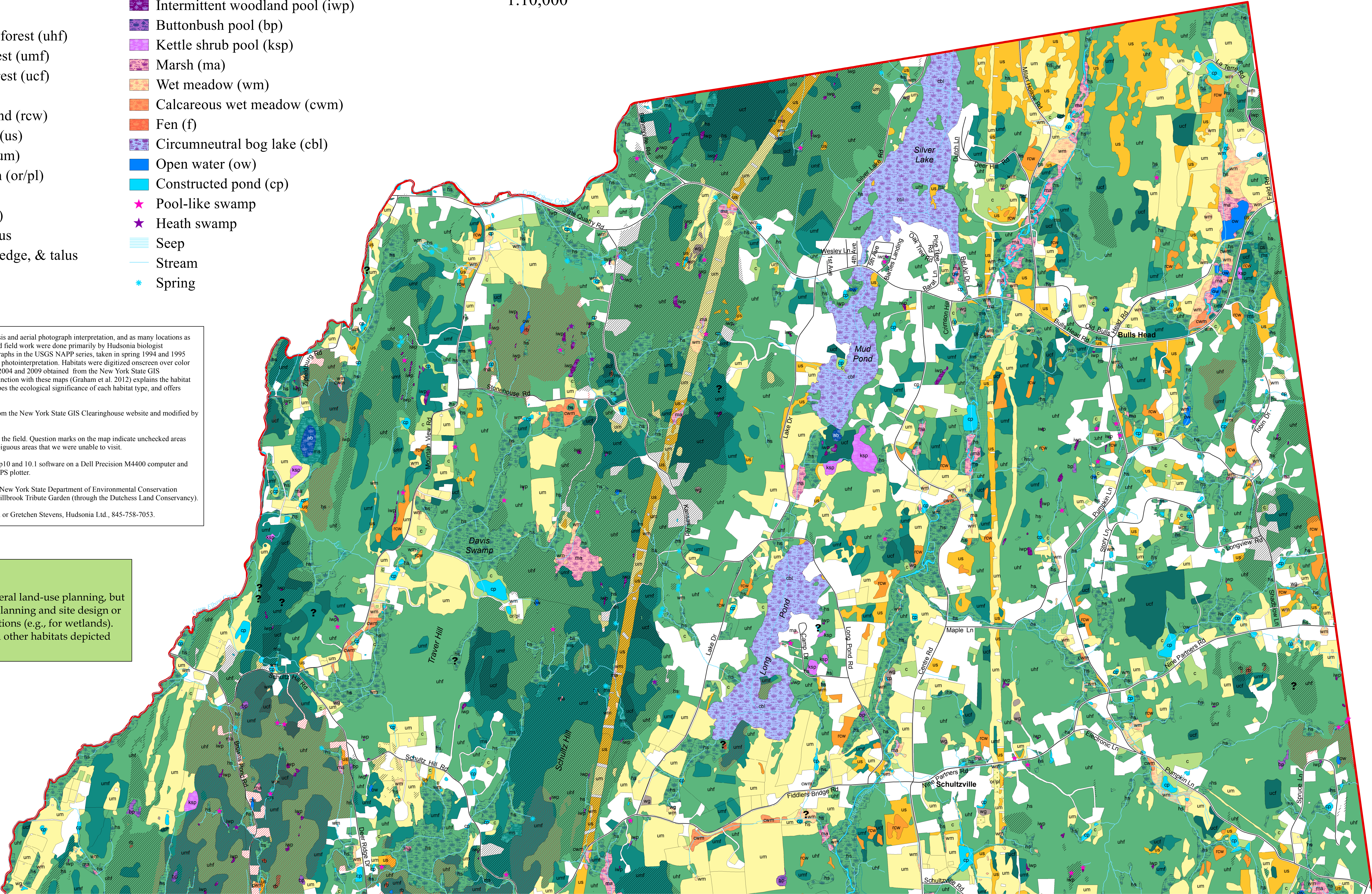
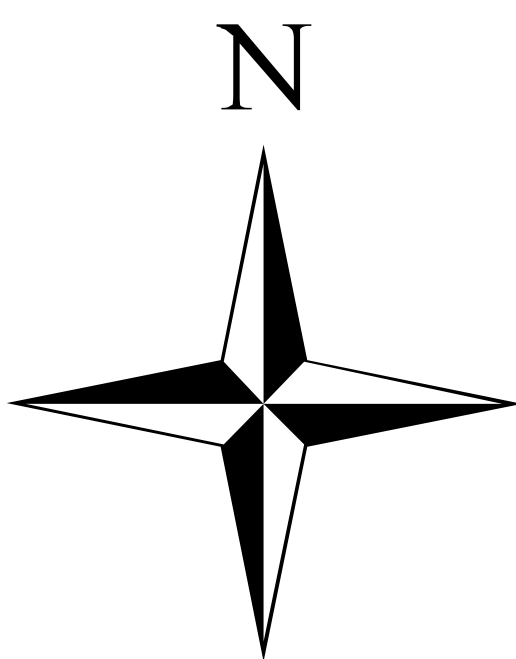
This map was created using ArcGIS Desktop10 and 10.1 software on a Dell Precision M4400 computer and printed on a Hewlett Packard DesignJet 800PS plotter.

Funds for this project were provided by the New York State Department of Environmental Conservation (through the Town of Clinton) and by the Millbrook Tribute Garden (through the Dutchess Land Conservancy).

For more information contact Chris Graham or Gretchen Stevens, Hudsonia Ltd., 845-758-7053.

An important caution:

This map is suitable for general land-use planning, but is not suitable for detailed planning and site design or for jurisdictional determinations (e.g., for wetlands). Boundaries of wetlands and other habitats depicted here are only approximate.



(Continued on Sheet 2)

(Continued on Sheet 3)