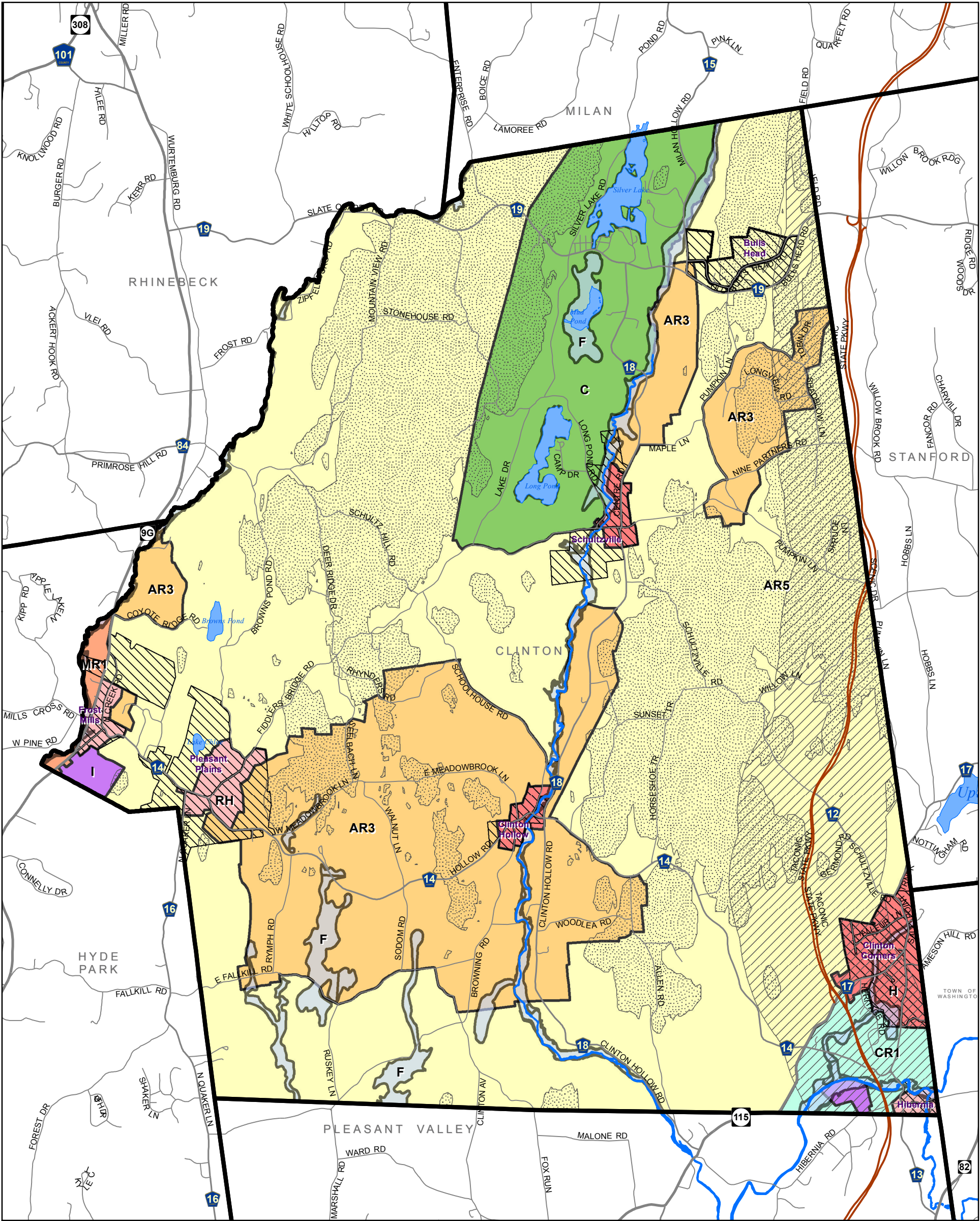


Figure 8.7: Current Zoning Districts
with Ridgeline, Scenic and Historic Overlay District

Town of Clinton, New York



Legend

- Local Road
- County Road
- State Road
- Taconic State Parkway
- Municipal Boundary
- Waterbody

Overlay District Elements

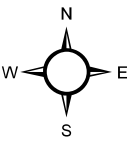
- Ridgeline Protection Area*
- Taconic State Parkway Viewshed*
- Critical Environmental Areas

Zoning Districts

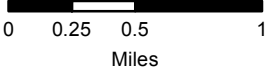
- CR1 - CLUSTERED RESIDENTIAL
- C - CONSERVATION AGRICULTURAL RESIDENTIAL
- H - HAMLET
- AR3 - LOW DENSITY AGRICULTURAL RESIDENTIAL
- MR1 - MEDIUM DENSITY RESIDENTIAL
- I - OFFICE LIGHT INDUSTRY
- RH - RESIDENTIAL HAMLET
- AR5 - VERY LOW DENSITY AGRICULTURAL RESIDENTIAL
- F - FLOODPLAINS**

*These areas are regulated under the Town of Clinton's Zoning Amendment Commercial Communication Facilities and Ridgeline, Scenic and Historic Protection Overlay District, March 2000. Refer to the law for further description.

**Data Source: FEMA Q3 GIS data; not part of Clinton Zoning Districts GIS data



1:48,000



Cornell University
Cooperative Extension
Dutchess County

GIS Lab, Environment Program
Cornell Cooperative Extension Dutchess County
July 1, 2011

WARNING: This map is not a substitute for land surveys or legal documents. No accuracy or completeness guarantee is implied or intended.

CCEDC provides equal program and employment opportunities. The programs provided by this agency are partially funded by monies received from the County of Dutchess.