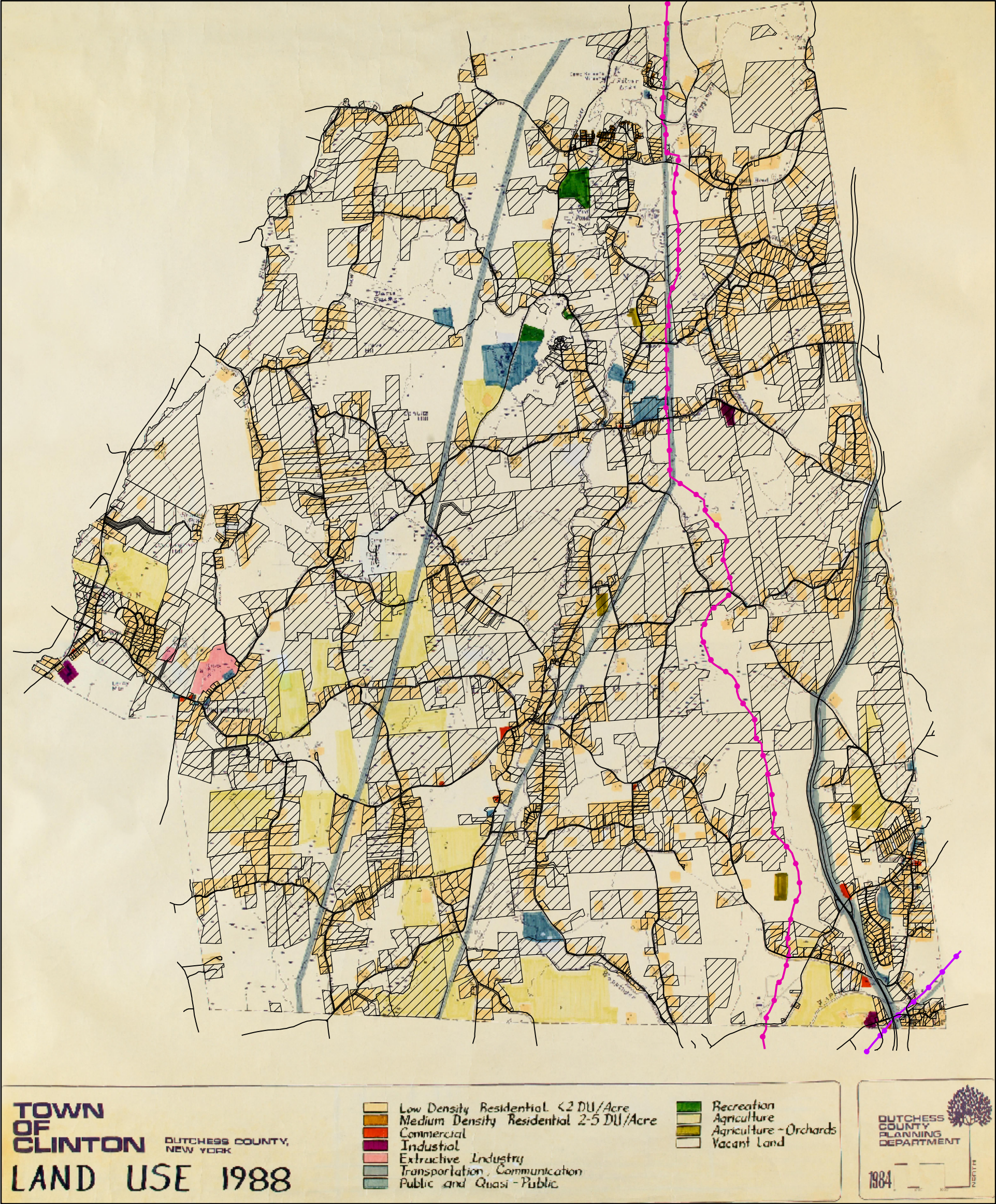


Figure 8.3: Residential Land Use Comparison 1988 to 2010
Town of Clinton, Dutchess County, New York



Legend

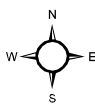
- Roads
- Gas Pipeline
- Electrical Trans. Line

Parcels by Assessor Code (2010)

- Residential

Land Use (1988)

- Residential
- Agricultural
- Vacant



1:48,000

0 0.5 1 2 Miles

Data Sources:

- Roads: Dutchess County Real Property Tax Service, February 2009
- Parcels by Assessor Code: Dutchess County Real Property Tax Service July 2010 - Final Roll
- Land Use: Dutchess County Planning Department, 1988
- Gas Pipeline: Dutchess County Real Property Tax Service Agency, May 2008

WARNING: This map is not a substitute for land surveys or legal documents. No accuracy or completeness guarantee is implied or intended.

Created by CCEDC GIS Lab, November 2009
Revised July 2010



Cornell University
Cooperative Extension
Dutchess County

CCEDC provides equal program and employment opportunities. The programs provided by this agency are partially funded by monies received from the County of Dutchess.