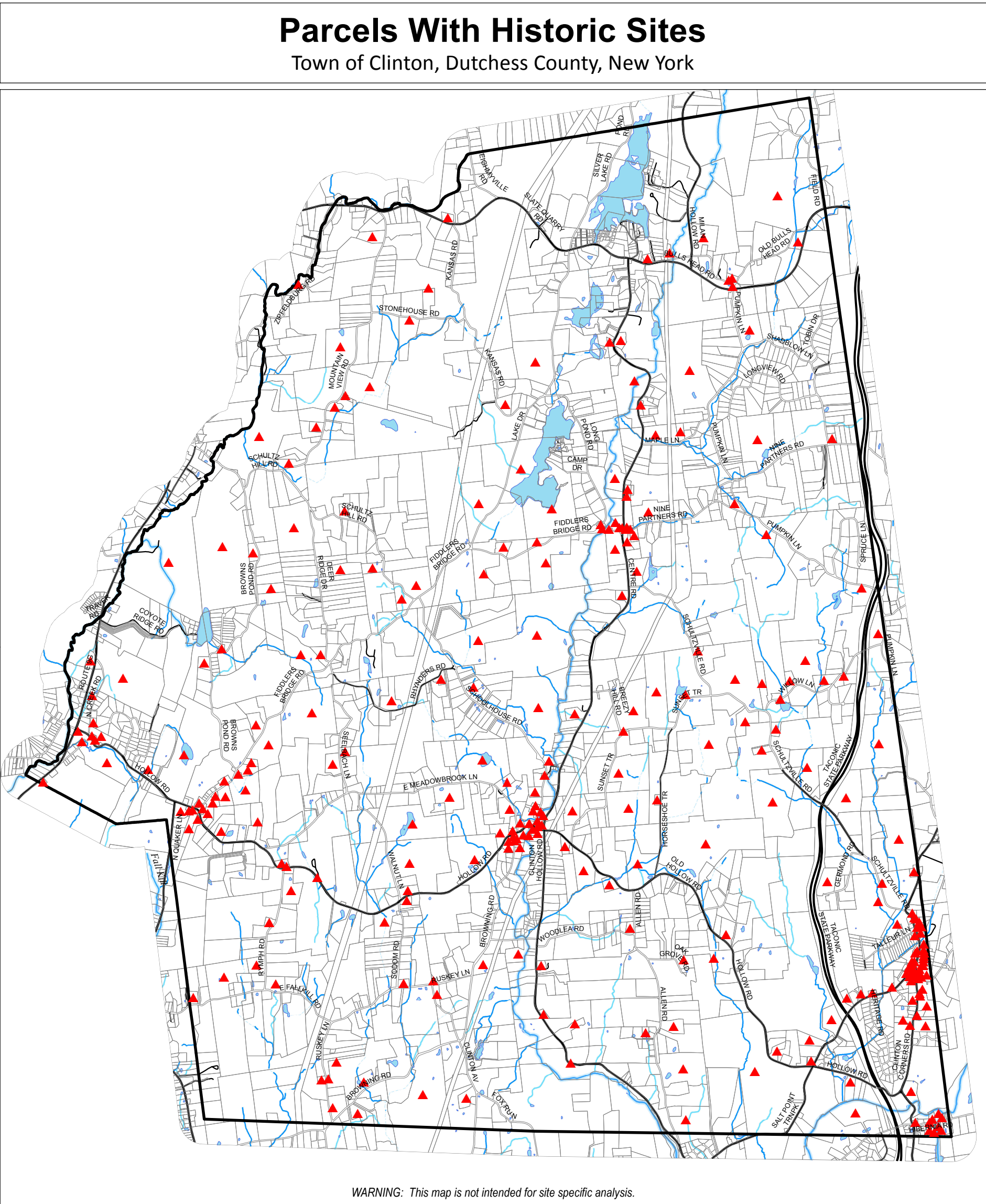


Figure 2.1 - Parcels With Historic Sites Map



Legend

- Town boundary
- Tax parcels (July 2009)
- Minor roads
- Major roads
- Waterbodies
- Stream type
 - Major stream
 - Perennial
 - Intermittent
- Parcels with historic sites

MAPPING CLINTON’S HISTORIC RESOURCES

The list and map of historic structures and locations were created,first, by consulting the map and notes created in 1988 by Stephanie Mauri, consultant from the Dutchess County Planning Department and Dutchess County Historical Society. The documented 163 structures or historic locations were checked on the Beers Atlas map of 1867 and 1876 map showing school districts. Each structure or location was then identified by driving the roads and verifying the placement.

Additional structures were added to the list by verifying their location by sight and on the historic maps. Names of owners of the properties were added as noted on the maps of 1867 and 1876. A total of 297 historic structures or locations were noted on the final list and map.

Finally, each parcel was located using the Dutchess County GeographicInformation System maps and the current owner, street address and Dutchess County parcel number was added to the list.

DATA SOURCES:
Municipal boundaries, tax parcels, and roads: Dutchess County Real Property Tax Service Agency, 2009.
Historic structures: Compiled from historic maps of 1867 and 1876; 1988 survey and map from DC Department of Planning consultant S. Mauri; maps and studies by former town historian, William Benson.
Streams, Waterbodies: National Hydrography Dataset, USGS 2007.

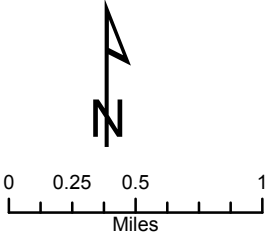


Figure 2.1 - Parcels With Historic Sites Map