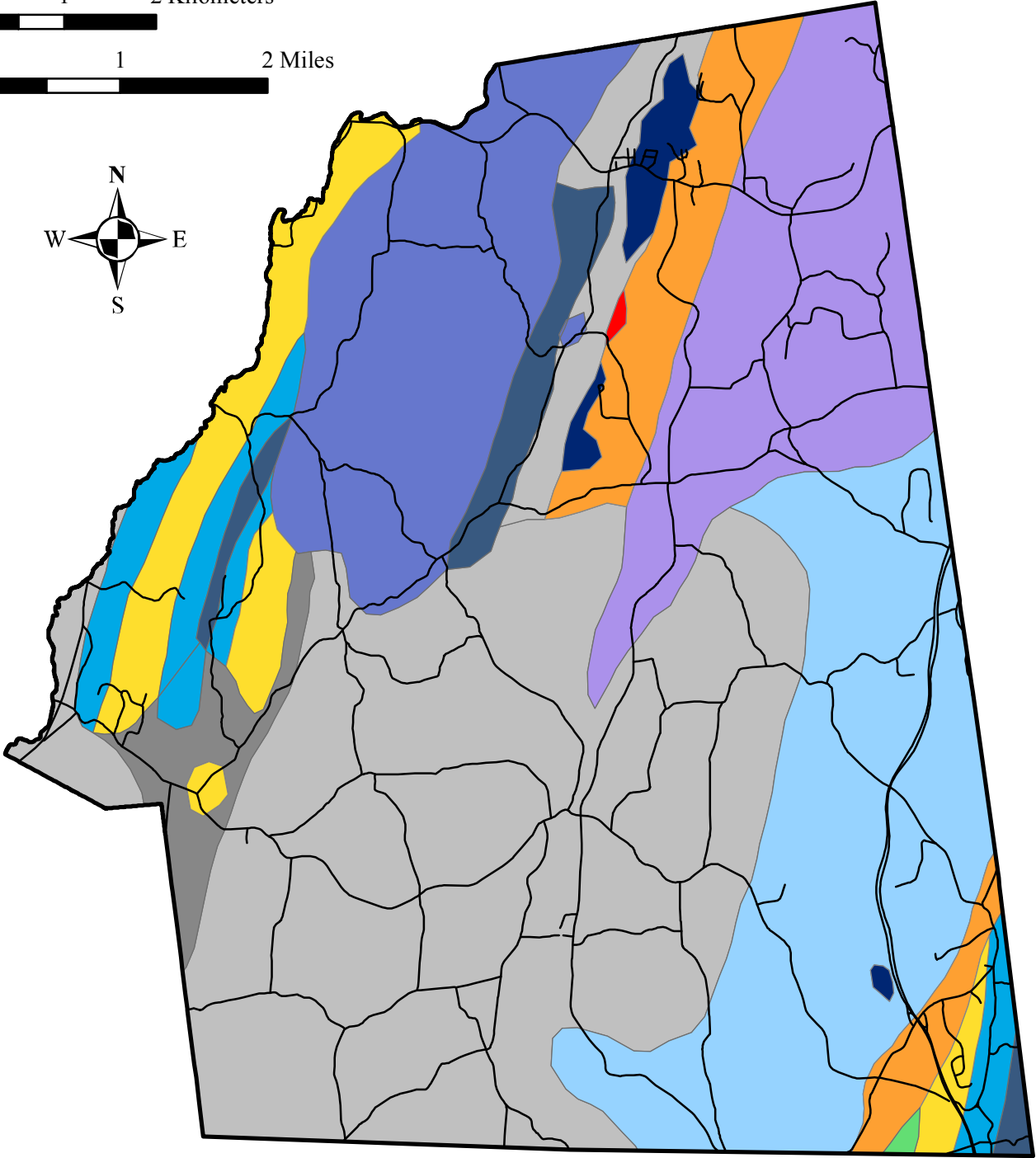
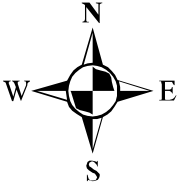


Figure 2. Generalized bedrock map of the Town of Clinton, Dutchess County, New York. Warm colors indicate bedrock that is likely to be calcareous (calcium carbonate-rich), and cool colors indicate bedrock that may be partially calcareous. Geology data from Fisher et al. (1970). Hudsonia Ltd., 2012.

0 1 2 Kilometers

0 1 2 Miles



Town boundary

Road

Bedrock geology

Limestone

Limestone, dolostone, shale, chert

Shale, conglomerate, limestone

Graywacke, shale

Shale, argillite, siltstone

Shale, siltstone

Slate, shale, quartzite, conglomerate, graywacke

Taconic melange

Phyllite, schist, metagraywacke

Shale, argillite, quartzite

Shale, argillite, chert

Water