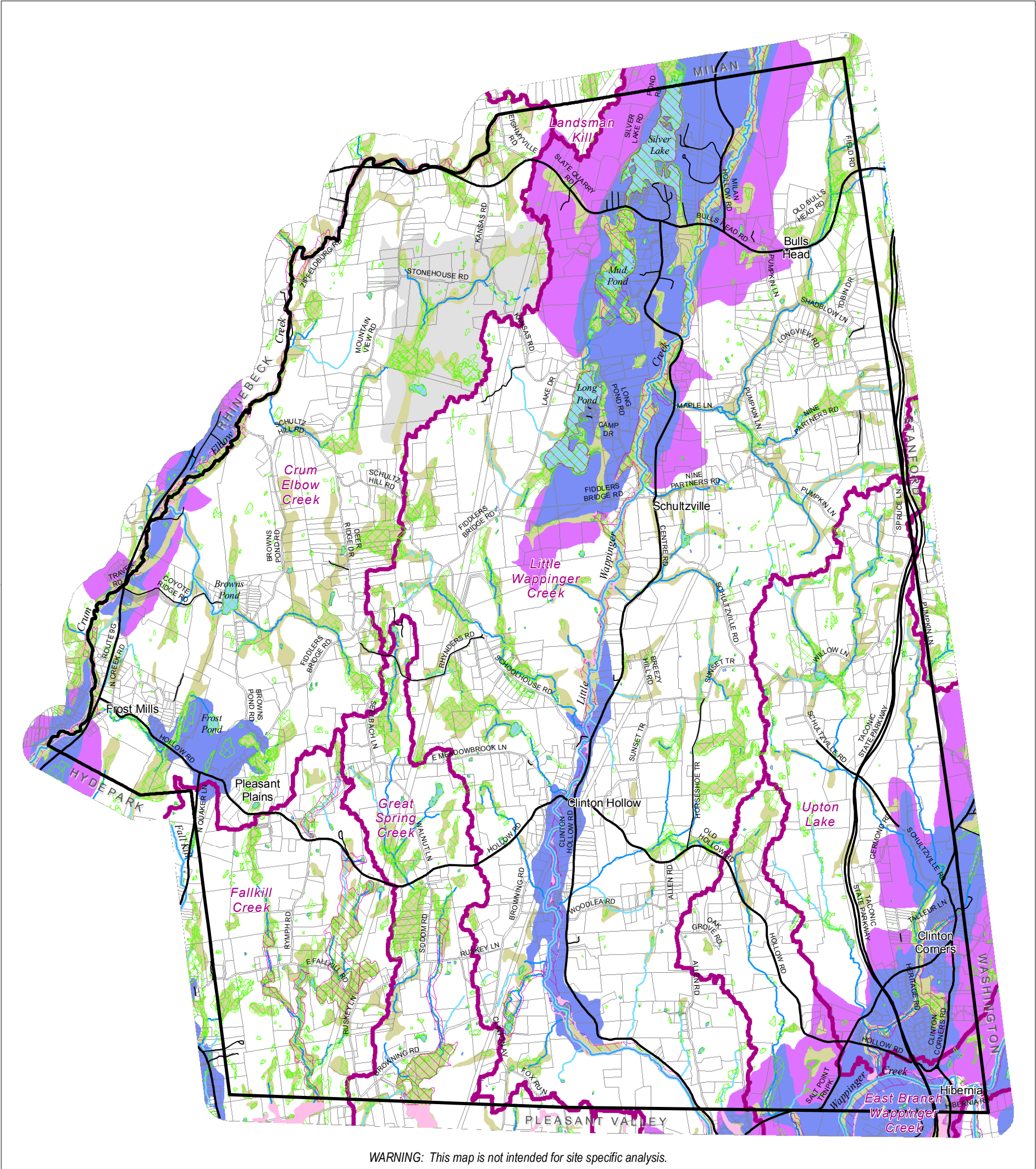


Figure 3.9 - Water Resources Map

Water Resources

Town of Clinton, Dutchess County, New York



WARNING: This map is not intended for site specific analysis.

Legend

- Town boundary
- Tax parcels (July 2009)
- Minor roads
- Major roads
- Waterbodies
- Stream type**
 - Major stream
 - Perennial
 - Intermittent
- Watershed divides

- Hydric soils
- NYS DEC Freshwater Regulated Wetlands and National Wetlands Inventory
- FEMA Flood Zones**
 - 100-year floodplain
 - 500-year floodplain
- Aquifer Recharge Zones**
 - 1- permeable, directly overlying aquifer
 - 2- less permeable, up gradient from aquifer, contributes to recharge
 - 3- contributes to a stream

DATA SOURCES:
Municipal boundaries, tax parcels, and roads: Dutchess County Real Property Tax Service Agency, 2009.
Streams, Waterbodies: National Hydrography Dataset, USGS 2007.
NWI Wetlands: National Wetland Inventory, US Fish & Wildlife Service, 2007.
NYSDEC Freshwater Wetlands: NYS Dept. of Environmental Conservation regulated wetlands, 2007.
Floodplains: Federal Emergency Management Administration (FEMA) Q3 Digital Flood Data, 1996.
Hydric Soils: USDA Natural Resources Conservation Service, SSURGO Database, 2006.
Aquifers: Digitized by University of New Hampshire GIS Lab for Horsley, Witten and Hegemann, Inc., consultants to DC Water and Wastewater Authority, 1992.
Watersheds: Dutchess County Dept. of Planning & Development, 2010.

Prepared by Sarah Love for Clinton Comprehensive Plan Committee, June 2010.

Figure 3.9 - Water Resources Map