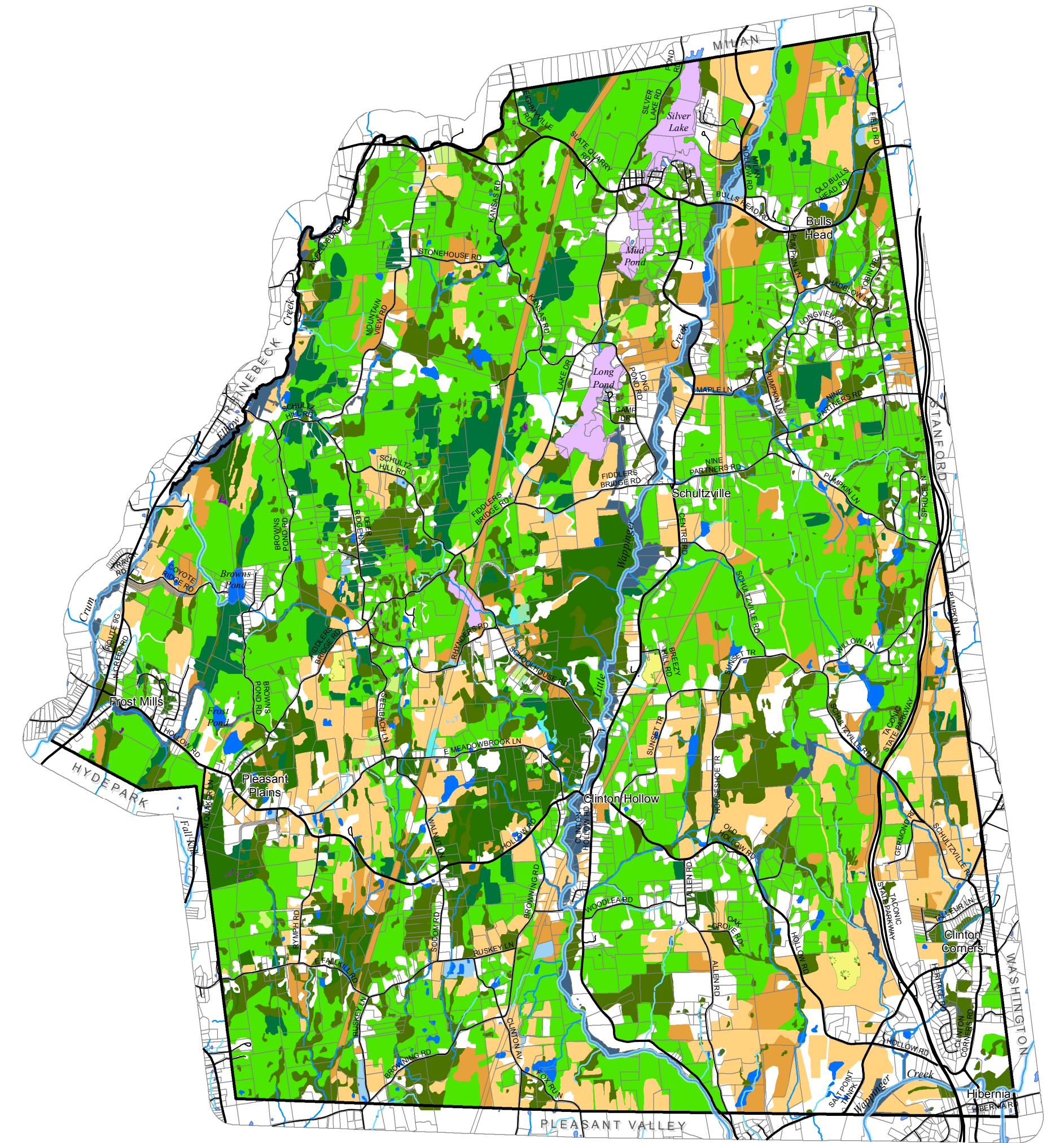


Figure 3.14 - Habitats Map

# Habitats

Town of Clinton, Dutchess County, New York



WARNING: This map is not intended for site specific analysis.

Disclaimer: The GIS layer of habitat information is being reviewed and edited by Hudsonia, Ltd. based on aerial photo analysis and field work.

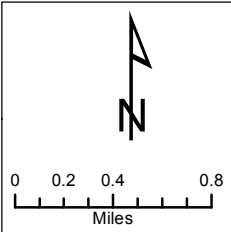
### Legend

- Town boundary
- Tax parcels (July 2009)
- Minor roads
- Major roads
- Waterbodies
- Stream type**
  - Major stream
  - Perennial
  - Intermittent

### Habitats

Kettle Shrub Pool	Upland Shrub
Ponds and Lakes	Upland Meadow
Circumneutral Bog Lake	Upland Mixed Forest
Intermittent Stream	Upland Hardwood Forest
Riparian Corridor	Upland Coniferous Forest
Intermittent Woodland Pool	Orchard / Tree Plantation
Swamp	Red Cedar Woods
Wet Meadow	Cultural
Hardwood Swamp	

Areas on the map that are not indicated as particular habitat are considered "developed" land, primarily residential or built, mixed with scattered habitat patches.



DATA SOURCES:  
Habitats: Digitized by J. Hagenstaller and S. Love. Classes based on Hudsonia's "Biodiversity Assessment Manual" with modifications. Classification was conducted using NAPP aerial photos (1995) and CIR images for Dutchess County (2004). See Appendix I of Master Plan for details. Municipal boundaries, tax parcels, and roads: Dutchess County Real Property Tax Service Agency, 2009. Streams, Waterbodies: National Hydrography Dataset, USGS 2007.

Prepared by Sarah Love for Clinton Comprehensive Plan Committee, March 2010.

Figure 3.14 - Habitats Map